



Microelectrode Holder

The removable microelectrode holders secure both shielded and non-shielded microelectrode(s) into the Microdrive or the NeuroDrive. Using its 5-hole design, you are able to record using up to five microelectrodes at once, or quickly move a single microelectrode to do parallel trajectories. Holes are 2mm apart on center.



Type	Qty.	Item Number
Microelectrode Holder 'x'	1/pkg.	341-000311-00
Microelectrode Holder '+'	1/pkg.	341-000312-00

Microelectrode Holder/Bengun Screw

Stainless steel replacement screws for securing the microelectrodes in the microelectrode Holder and the Guide Tubes in the Bengun.



Type	Qty.	Item Number
Bengun Screw	1/pkg.	341-000056-00
Bengun Screw	5/pkg.	341-000056-05

DBS Lead Holder/Microdrive Screw

Stainless steel replacement screw for securing the DBS clamps to DBS Holder Rod. Also used to secure the Microdrive Unit to the Microdrive Base.



Type	Qty.	Item Number
DBS Lead Holder	1/pkg.	351-000032-01

Microdrive Cover Screw

Stainless steel replacement screw for securing top cover of Microdrive in closed position.



Type	Qty.	Item Number
Microdrive Cover Screw	1/pkg.	341-000305-00

Microdrive Bengun

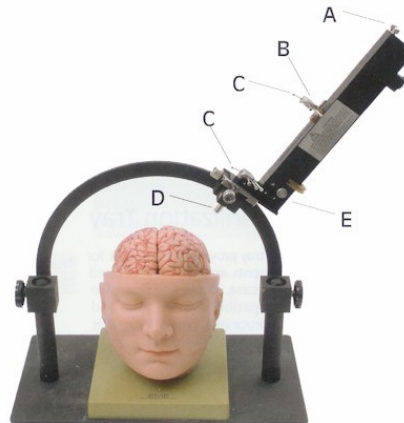
The stainless steel Bengun secures the outer Guide Tubes(PN 010-427400) into Microdrive base. Its five-hole design provides 5 parallel trajectories without moving the stereotactic head frame. Holes are 2mm apart on center, and the orientation can easily be changed to 'x' or '+' as desired. Bengun screws are sold separately (see above).



Type	Qty.	Item Number
Microdrive Bengun	1/pkg.	341-000307-00

Microdrive: Terminology

- A. Microdrive Cover Screw
- B. Microelectrode Holder
- C. Microelectrode Holder Screws
- D. Bengun
- E. Microdrive screw

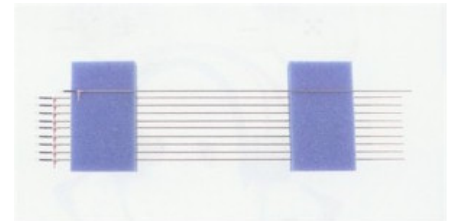


NeuroDrive: Terminology

- A. Manual knob
- B. Microelectrode Holder
- C. Microelectrode Holder Screws
- D. Bengun
- E. Microdrive screw

Disposable NeuroProbes

Designed specifically for the MicroGuide system and manufactured by Alpha Omega engineering, Inc., the Platinum/Iridium or Tungsten microelectrode tip can be retracted into the insulated Stainless Steel sheath for protection during insertion of the electrode into the Microdrive. The sheath provides shielding to reduce noise in the recording, and a 1mm contact to use for bipolar recording and macrostimulation. Platinum/Iridium microelectrode is less susceptible to degrading effects of microstimulation currents. Shielded electrodes also have an additional outer stainless steel cannula that fits directly into the Outer Guide Tube of the MicroGuide Microdrive. Sterilization is required prior to use. Single use only.



Type	Impedance	Qty.	Item Number
Plt./Irid. shielded	1.0± 0.2	10/pkg.	366-000025-10
Tungsten Shielded	1.0+ 0.2	10/pkg.	366-000023-10
Tungsten Non-Shielded	1.0+ 0.2	10/pkg.	366-000024-10
ND Plt./Irid. shielded	1.0+ 0.2	10/pkg.	366-000925-10
ND Tungsten Shielded	1.0+ 0.2	10/pkg.	366-000080-10
ND Tungsten Non-Shielded	1.0+ 0.2	10/pkg.	366-000079-10
Custom Tungsten		10/pkg.	366-00XXXX-10
Custom Plt./Irid.		10/pkg.	366-00XXXX-10

Disposable Guide Tubes

The inner diameter of the Outer Guide Tube will accommodate the DBS electrode lead; eliminating the need to switch guide tubes and maximizing both the ease and the accuracy of DBS electrode lead placement. Inner Guide Tube fits inside of the Outer Guide Tube to reduce inner diameter when using non-shielded microelectrodes.



Type	Qty.	Item Number
Outer Guide Tube w/Stylet	1/pkg.	366-000021-00
Outer Guide Tube w/Stylet	10/pkg.	366-000021-10
Tapered Guide Tube w/Stylet	1/pkg.	366-000076-00
Tapered Guide Tube w/Stylet	10/pkg.	366-000076-10

Electrode Pin Adapters

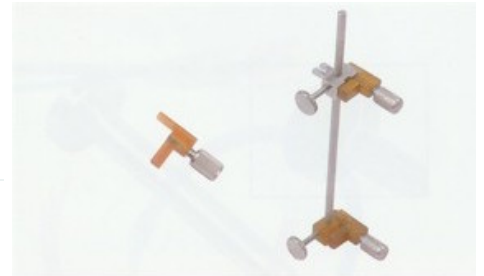
This adapter goes from an .8mm female connection to a 1mm male pin adapter. Designed for use with microelectrode pin to Head-Stage Extension Cable.



Type	Qty.	Item Number
Pin Adapter	10/pkg.	020-000023-10

Microdrive DBS Lead Holder

Removable DBS lead holder provides support for the DBS electrode lead during placement and macrostimulation testing. The Lead Holder can also be used to secure lesioning electrodes in pallidotomy and thalamotomy procedures.



Type	Qty.	Item Number
Upper DBS Clamp Assembly	1/pkg.	341-000300-00
Lower DBS Clamp Assembly	1/pkg.	341-000304-00
'L' Clamp (fits Upper & Lower)	1/pkg.	341-000314-00
DBS Holder Rod	1/pkg.	341-000049-00

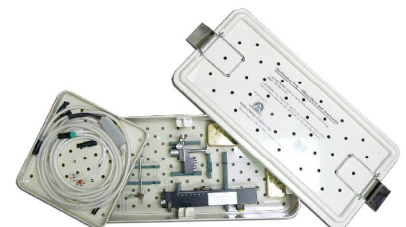
NeuroDrive DBS Lead Holder

Removable DBS lead holder provides support for the DBS electrode lead during placement and macrostimulation testing. The Lead Holder can also be used to secure lesioning electrodes in pallidotomy and thalamotomy procedures.

Type	Qty.	Item Number
NeuroDrive DBS holder	1/pkg.	700-001501-00

MicroGuide Sterilization Tray

This tray is designed to hold all MicroGuide accessories during sterilization, including the MicroDrive, headstage cables and other parts. For use during EtO "Gas" or STERAD sterilization.



Type	Qty.	Item Number
Sterilization Tray	1.pkg.	366-000122-02

Electrode and accessories Sterilization Tray

The tray's specially designed inserts will support 7 microelectrodes, 5 Guide Tubes and X/Y stage adapter during each sterilization cycle for use steam sterilization only.

Type	Qty.	Item Number
Sterilization Tray	1.pkg.	366-000022-02

MicroGuide Headstage

Pre-amplifier(s) near the patient provides a higher quality signal for microelectrode channel(s). also provides electronic switching of stimulus current to desired micro/macro electrode contact.

Type	Qty.	Item Number
1 Channel	1 each	700-120001-02
2 Channels	1 each	700-120002-02
3 Channels	1 each	700-120003-02
4 Channels	1 each	700-120004-02
5 Channels	1 each	700-120005-02



Head Stage Extension Cable

Needed to connect microelectrodes to MicroGuide Head Stage. Requires electrode pin adapters (PN:019-429900) and GND clip wire (PN:720-013800)

Type	Qty.	Item Number
1 Channel	1 each	190-000115-01
2 Channels	1 each	190-000115-02
3 Channels	1 each	190-000115-03
4 Channels	1 each	190-000115-04
5 Channels	1 each	190-000115-05



Ground Clip Wire

Cable adapts four 1mm male pins to Alligator clip. Used to connect GND, REF, as well as any unused microelectrode inputs to the Microdrive base.

Type	Qty.	Item Number
Ground Clip Wire	5/pkg.	020-000023-15



Microdrive Cable

Gas/Sterad or steam sterilizable cable connects Microdrive to MicroGuide system.

Type	Qty.	Item Number
Steam Sterilizable	1/pkg.	190-000107-02



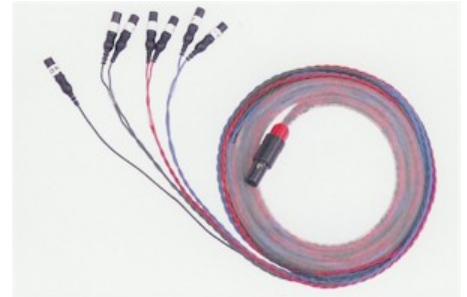
NeuroDrive Cable

Gas or Sterad sterilizable cable connects NeuroDrive to MicroGuide system.

Type	Qty.	Item Number
NeuroDrive Cable for MicroGuide	1/pkg.	190-000213-00

Auxiliary Input Cable

Provides connection for one to seven bipolar EMG, accelerometers/other non-microelectrode channels (if available) on MicroGuide system. Each bipolar channel is a twisted pair terminated in standard DIN ("Touchproof") connectors.



Type	Qty.	Item Number
1 Channel	1 each	190-000119-01
2 Channel	1 each	190-000119-02
3 Channel	1 each	190-000119-03
4 Channel	1 each	190-000119-04
5 Channel	1 each	190-000119-05
6 Channel	1 each	190-000119-06
7 Channel	1 each	190-000119-07

DBS Ruler

DBS ruler is a tool for marking the DBS electrode according to electrode length.

Type	Qty.	Item Number
DBS Ruler	1/pkg.	700-001502-00



Alpha Omega Co. USA
105 Nobel Court
Ste 101
Alpharetta, GA 30005
Toll Free (877) 919-6288
Fax (877) 471-2055

Alpha Omega GmbH
Gartner Str. 30
Ubstadt-Weiher
76698 Germany
Toll Free: 00-800-2574-2111
Fax: +49-7251-4406619

Alpha Omega Engineering
Avuda St.3; PO Box 810
Nazareth Illit 17105
Israel
Tel +972-4-656-3327
Fax +972-4-657-4075